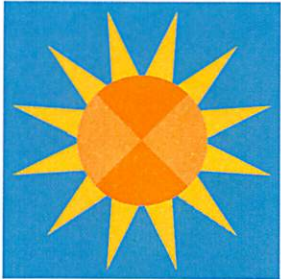





- [Registration](#)
- [Location and Hotel Information](#)
- [Agenda & Technical Committee](#)
- [Exhibitors & Sponsors](#)
- [Health & Safety Guidelines](#)
- [CPE Credit](#)
- [Future PDTs](#)



# PDT 2023

July 23-26, 2023  
Orlando or Virtual



AGA's premier training and networking event

July 23-26 | Orlando  
24 CPEs

## Registration and Fees

Early bird deadline – Jun. 23, 2023

	Online	All Other
<b>AGA Members</b>		
Early Bird	\$925	\$950
Standard	\$1,025	\$1,050
<b>Non-members</b>		
Early Bird	\$1,125	\$1,150
Standard	\$1,225	\$1,250

[Register Now](#)

Join AGA to  
Save \$200!

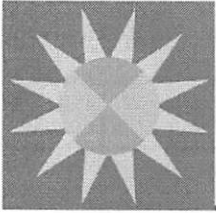
## Training Location

- [Hotel Room Reservations](#)
- [Airport Information](#)
- [Ground Transportation](#)
- [Attendee Justification & Approval Re](#)
- [Local Attraction/Discounts/Attraction](#)



## Information

Bronze Sponsor



# AGA<sup>®</sup> PDT 2023

July 23-26, 2023  
Orlando

---

## Schedule at-a-Glance

### SUNDAY, JULY 23

7:30–10:30 a.m.	National Council of Chapters (NCC)
8 a.m.–6 p.m.	Registration Open
10:30 a.m.–12 p.m.	Intergovernmental Partnership Steering Committee Meeting (invitation only)
11 a.m.–12:30 p.m.	AGA Past National President and Treasurer Council Luncheon Meeting
<b>1–2:15 p.m.</b>	<b>Concurrent Sessions</b>
<b>2:30–3:45 p.m.</b>	<b>Concurrent Sessions</b>
<b>4–4:50 p.m.</b>	<b>Concurrent Sessions</b>
5–7 p.m.	Welcome Event in Solutions Hall

### MONDAY, JULY 24

6–6:30 a.m.	Early Morning Stretch & Exercise
6:30 a.m.–4 p.m.	Registration Open
7–8 a.m.	Continental Breakfast in Solutions Hall
7 a.m.–6:15 p.m.	Solutions Hall Open (closed noon–1 p.m.)
8–8:30 a.m.	Opening Ceremony
<b>8:30–9:45 a.m.</b>	<b>Opening Plenary Session</b>
9:45–10:30 a.m.	Coffee Break in Solutions Hall
<b>10:30–11:45 a.m.</b>	<b>Concurrent Sessions</b>
11:45 a.m.–12:40 p.m.	Awards Luncheon
12:40–1 p.m.	President Gavel Exchange Ceremony
<b>1–1:50 p.m.</b>	<b>Plenary Session</b>
1–2 p.m.	FM Standards Board Meeting
<b>2:05–3:20 p.m.</b>	<b>Concurrent Sessions</b>
3:20–4 p.m.	Coffee Break in Solutions Hall
<b>4–4:50 p.m.</b>	<b>Concurrent Sessions</b>
4:50–6:15 p.m.	Networking Event in Solutions Hall

## TUESDAY, JULY 25

6–6:30 a.m.	Early Morning Stretch & Exercise
6:30 a.m.–4 p.m.	Registration Open
7–8 a.m.	Continental Breakfast in Solutions Hall
7 a.m.–4:05 p.m.	Solutions Hall Open (closed noon–1 p.m.)
<b>8–9:15 a.m.</b>	<b>Plenary Session</b>
<b>9:30–10:20 a.m.</b>	<b>Concurrent Sessions</b>
10:20–11 a.m.	Coffee Break in Solutions Hall
<b>11–11:50 a.m.</b>	<b>Concurrent Sessions</b>
12–1 p.m.	Awards Luncheon
<b>1:05–2:20 p.m.</b>	<b>Concurrent Sessions</b>
<b>2:35–3:25 p.m.</b>	<b>Concurrent Sessions</b>
3–6 p.m.	Young Professionals Sessions
3:25–4:05 p.m.	Coffee Break in Solutions Hall (last chance to see/network with exhibitors)
<b>4:05–4:55 p.m.</b>	<b>Concurrent Sessions</b>
5:00–6:00 p.m.	CPAG Meeting
8–10 p.m.	AGA Networking Reception

## WEDNESDAY, JULY 26

6–6:30 a.m.	Early Morning Stretch & Exercise
6:30 a.m.–4 p.m.	Registration Open
7:30–8:30 a.m.	Breakfast and Awards Recognition
<b>8:30–10:10 a.m.</b>	<b>Plenary Sessions</b>
10:10–10:30 a.m.	Coffee Break
<b>10:30–11:45 a.m.</b>	<b>Concurrent Sessions</b>
11:55 a.m.–12:45 p.m.	Awards Luncheon
<b>1–1:50 p.m.</b>	<b>Concurrent Sessions</b>
<b>2:05–2:55 p.m.</b>	<b>Concurrent Sessions</b>
<b>3:05–4:05 p.m.</b>	<b>Closing Plenary Session</b>
6–10 p.m.	President's Appreciation Reception




[Registration](#)

[Location and Hotel Information](#)

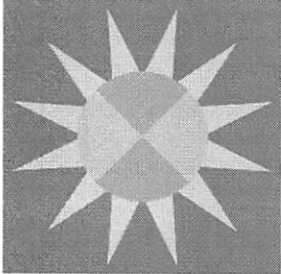
[Agenda & Technical Committee](#)

[Exhibitors & Sponsors](#)

[Health & Safety Guidelines](#)

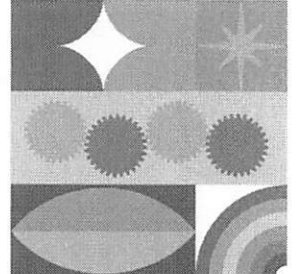
[CPE Credit](#)

[Future PDTs](#)



# PDT 2023

July 23-26, 2023  
Orlando or Virtual



AGA's premier training and networking event

July 23-26 | Orlando  
24 CPEs

## Registration and Fees

Early bird deadline – Jun. 23, 2023

	Online	All Other
<b>AGA Members</b>		
Early Bird	\$925	\$950
Standard	\$1,025	\$1,050
<b>Non-members</b>		
Early Bird	\$1,125	\$1,150
Standard	\$1,225	\$1,250

[Register Now](#)

Join AGA to  
Save \$200!

## CPE Credit

PDT 2023 offers 24 Continuing Professional Education (CPE) hours based on NASBA's CPE calculation

50 minute session = 1 CPE

75 minutes session = 1.50 CPEs



Bronze Sponsor

For more information about speakers and session descriptions, please see the agenda/technical committee page.

## Prerequisites/Learning Objectives

**Program level:** Intermediate

**Prerequisite:** This program is suitable for participants who have attained at least mid-level within an organization; have knowledge, skills and ability commensurate with that level; and have operational and/or supervisory responsibilities.

**Advance preparation:** None required.

**Delivery method:** Group Internet-based (virtual)

**Learning objective:** At the conclusion of PDT 2023, participants will have learned about the latest developments in government financial management and ways to implement ideas, tools and resources into their procedures. Attendees will also be able to network with top-notch professionals from federal, state and local governments, academia and the private sector and learn from them about ways to plan and build stronger projects and ensure greater success at all agency levels.

## CPE Tracking Process

AGA adheres to the National Association of State Boards of Accountancy (NASBA) standards for CPE programs, which require an attendance verification process for all training events.

### **In-Person Participant (Orlando, FL)**

AGA scans name badges at varying times and will use this information to tally your education session attendance and create your CPE certificate. For each individual session, you must attend the entire session to receive credit. Participants who arrive more than 10 minutes late for a session or depart early may not receive credit.

### **Virtual Participation (from your home/office)**

During the course of this virtual training event, you will be required to click on a series of pop-up boxes that will appear at random times. When these boxes pop up, you will have a brief period of time to click on the "Continue Viewing" button. If you fail to click on these pop-ups, you will be ineligible to claim CPE credits for that session.

**Announcing the pop-up alertness checks to fellow attendees in the chat box during a session is against NASBA policy. Doing so may cause you to be ineligible to earn the CPE credit.**

## Session Recordings

Recordings for all sessions will be available for all attendees to access at least two business weeks after the training. **Please note:** Recordings *do not* offer CPE and PDU credits. You must participate in the live-streaming events to receive credits. Please refer to tracking process above for instructions.

## CPE Retrieval

CPE certificates will be available online to download and print within two weeks after the training. When they are ready, all attendees will receive an email about it.

Should you have any questions, please contact [education@agacgfm.org](mailto:education@agacgfm.org). If you need help accessing your AGA account login information, please contact [agamembers@agacgfm.org](mailto:agamembers@agacgfm.org) or call 800.242.7211, ext. 301.

**Please note:** CPE certificates are available only to attendees who have paid their training event balance in full.

## CGFM CPE Requirements and NASBA Certification



CPE hours earned during this event can be used to fulfill CGFM CPE requirements. To learn more about the CGFM certification, contact AGA's Office of Professional Certification.



AGA is registered with the National Association of State Boards of Accountancy (NASBA) as a sponsor of continuing professional education on the National Registry of CPE Sponsors. State boards of accountancy have final authority on the acceptance of individual courses for CPE credit. Complaints regarding registered sponsors may be submitted to the National Registry of CPE Sponsors through its website: [www.nasbaregistry.org](http://www.nasbaregistry.org). **National Registry of CPE Sponsor ID: 104201**

## CPE Field of Study

To help you decide which presentations to attend, each session on the agenda will be marked to indicate the target audience – Federal; State & Local; or All – and the CPE Field of Study (FOS). CPE FOS are as follows:

- Accounting: ACC
- Accounting (Governmental): ACCG
- Auditing: AUD
- Auditing (Governmental): AUDG
- Behavioral Ethics: BETH
- Business Law: BLAW
- Business Management & Organization: BMO
- Communications and Marketing: COMS
- Computer Software & Applications: CS
- Economics: ECO
  
- Finance: FIN
- Information Technology: IT
- Management Services: MGMT
- Personal Development: PD
- Personnel/Human Resources: HR
- Production: PRD
- Regulatory Ethics: REGETH
- Specialized Knowledge: SK
- Statistics: STAT
- Taxes: TAX

## Questions?

[exhibit/sponsorship](#)

[registration](#)

[CPEs or agenda](#)

---

[About AGA](#)

[Leadership](#)

[Code of Ethics](#)

[Strategic Plan](#)

[Donate to AGA](#)

[Contact Us](#)

[Membership](#)

[Become a Member](#)

[Renew Now](#)

[Member Types](#)

[Member Directory](#)

[Membership FAQ](#)

[CGFM Certification](#)

[Apply for CGFM](#)

[My CGFM](#)

[My Path to CGFM](#)

[Verify CGFM Status](#)

[CGFM FAQ](#)

[My AGA](#)

[My Account](#)

[Leader Directories](#)

[Chapter Resources](#)

[Member Resources](#)

[My CPE](#)



© 2023, AGA

---

AGA is a registered trademark.